



# CURE IT<sup>®</sup>

GRP WATERPROOFING SYSTEM

## PRODUCTS

## Roofing Resin

Used to form the GRP laminate with the reinforcement mat.

| UNIT SIZE | COVERAGE           | PRODUCT CODE |
|-----------|--------------------|--------------|
| 10kg      | 6.75m <sup>2</sup> | RESCUREIT10  |
| 20kg      | 13.5m <sup>2</sup> | RESCUREIT20  |



## Roofing Topcoat

Topcoat provides the finished colour and surface appearance.

| UNIT SIZE | COVERAGE           | PRODUCT CODE |
|-----------|--------------------|--------------|
| 5kg       | 12.5m <sup>2</sup> | TOPCUREIT5   |
| 10kg      | 25m <sup>2</sup>   | TOPCUREIT10  |
| 20kg      | 50m <sup>2</sup>   | TOPCUREIT20  |



## Hardener

Hardener for resin and topcoat.

| UNIT SIZE      | PRODUCT CODE |
|----------------|--------------|
| 1kg Summer     | CATCURES1    |
| 5kg Summer     | CATCURES5    |
| 1kg Winter     | CATCUREW1    |
| 5kg Winter     | CATCUREW5    |
| 1kg Extra Slow | CATCURELPT1  |
| 5kg Extra Slow | CATCURELPT5  |



**IMPORTANT:**  
Read handling  
and storage  
instructions.

## Hardener Dispenser

Hardener should not be added to resin or topcoat without the safety dispenser.

| PRODUCT CODE |
|--------------|
| CATDCUREIT   |



## Acetone

Used for cleaning tools, spillages and as a surface decontaminant.

| UNIT SIZE | PRODUCT CODE  |
|-----------|---------------|
| 1L        | ACETONECURE1  |
| 5L        | ACETONECURE5  |
| 10L       | ACETONECURE10 |



## Trim Adhesive

Used for bonding GRP edge trims around the perimeter of the roof.

| PRODUCT CODE |
|--------------|
| PUCUREGREY   |



## Mixing Bucket

Essential for determining the correct hardener addition.

| PRODUCT CODE |
|--------------|
| BUCKCURE     |



## Concrete Primer

Primer for preparing concrete substrates.

| UNIT SIZE | COVERAGE         | PRODUCT CODE        |
|-----------|------------------|---------------------|
| 2.5kg     | 5m <sup>2</sup>  | CUREITCONPRIMER2.5L |
| 5kg       | 10m <sup>2</sup> | CONPRIMER5L         |



## Slate Granules

Used to achieve coated aggregate finish or anti-slip for F.A.A fire rating.

| UNIT SIZE | PRODUCT CODE |
|-----------|--------------|
| 25kg      | SLATE        |



# 10-12m² Roof Kit

The Cure It GRP roof kit includes all of the laminating materials you need for a 10-12m² Cure It GRP laminate.

| PRODUCT CODE |
|--------------|
| CUREITKIT    |



## Reinforcements

### Reinforcement Mat

Forms the GRP laminate when combined with Roofing Resin.

#### Standard Weight Chopped Strand Mat

| UNIT SIZE | COVERAGE | PRODUCT CODE   |
|-----------|----------|----------------|
| 6.6kg     | 13m²     | CSM450CURE15   |
| 16.5kg    | 32.5m²   | CSM450CUREHALF |
| 33kg      | 66m²     | CSM450CURE     |

#### Heavyweight Chopped Strand Mat for walkways and balconies

| UNIT SIZE | COVERAGE | PRODUCT CODE   |
|-----------|----------|----------------|
| 16.5kg    | 25m²     | CSM600CUREHALF |
| 33kg      | 50m²     | CSM600CURE     |

### Reinforcement Bandage

Used as reinforcement for forming corners and other detail on the roof. 75mm x 75mm

| COVERAGE    | PRODUCT CODE |
|-------------|--------------|
| 75mm x 75mm | BAND75CURE   |

### Detail Tissue

For finishing corner and joint detail.

| COVERAGE    | PRODUCT CODE      |
|-------------|-------------------|
| 150mm x 25m | TISS150CUREDETAIL |



## Eye Wash Station

Contains:  
2 x 500ml Sterile eye wash  
2 x Sterile eye pads with dressing

| PRODUCT CODE  |
|---------------|
| EYEWASHCUREIT |



## Disposable Gloves

| UNIT SIZE      |
|----------------|
| 100 Latex Pack |
| PRODUCT CODE   |
| GLOV           |



## Accessory Pack

The accessory pack includes all of the tools and accessories required for laminating a GRP roof. The rollers and brushes in this pack are designed for use with our resins. Other third party products are likely to be unsuitable for this purpose.

| PRODUCT CODE    |
|-----------------|
| CUREITACCESSORY |



## Paddle Roller

A critical part of the system. Used to saturate the reinforcement mat with resin and remove trapped air.

| UNIT SIZE | PRODUCT CODE        |
|-----------|---------------------|
| 70mm      | PADDLEROLLERCUREIT3 |
| 140mm     | PADDLEROLLERCUREIT6 |
| 230mm     | PADDLEROLLERCUREIT9 |



## Application Roller

| UNIT SIZE | PRODUCT CODE |
|-----------|--------------|
| 70mm      | ROLLER3      |
| 140mm     | ROLLER6      |
| 230mm     | ROLLER9      |



## 175mm Premium Roller (5 pack)

| UNIT SIZE | PRODUCT CODE       |
|-----------|--------------------|
| 5 pack    | ROLLER7CUREITBOX5  |
| 50 pack   | ROLLER7CUREITBOX50 |



## 175mm Premium Roller Sleeves (5 pack)

| UNIT SIZE | PRODUCT CODE             |
|-----------|--------------------------|
| 5 pack    | ROLLERSLEEVE7CUREITBOX5  |
| 50 pack   | ROLLERSLEEVE7CUREITBOX50 |



## Laminating Brush

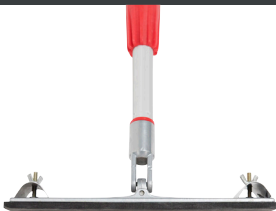
For detail work and bandaging.

| UNIT SIZE | PRODUCT CODE |
|-----------|--------------|
| 25mm      | BRUSH1       |
| 50mm      | BRUSH2       |
| 75mm      | BRUSH3       |
| 100mm     | BRUSH4       |



## Extension Pole and Swivel Sanding Pad

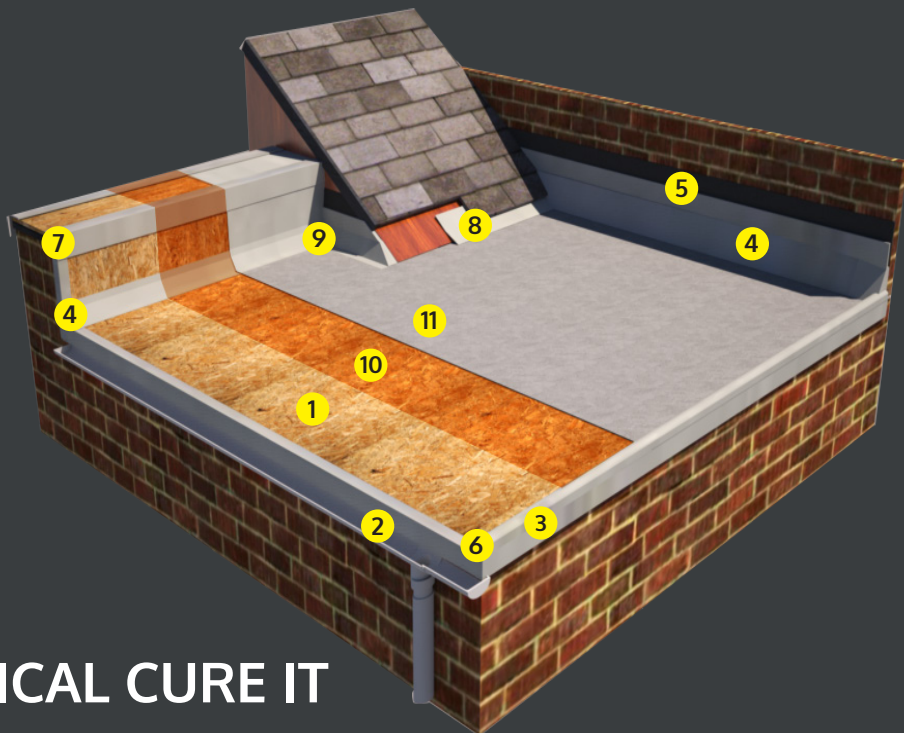
| PRODUCT CODE                |
|-----------------------------|
| EXTENSIONPOLE<br>SANDINGPAD |



## High Performance Hand Cleaner

| UNIT SIZE | PRODUCT CODE |
|-----------|--------------|
| 1L        | HANDCURE     |





# TYPICAL CURE IT ROOF BUILD UP

- 1 OSB3 18MM DECKING BOARDS (T&G 2400MM X 600MM RECOMMENDED)
- 2 A200 (FASCIA TRIM) USED FOR GUTTER/DRIP EDGE/FASCIA
- 3 B260 (RAISED EDGE) TRIM USED TO FORM UPSTANDS
- 4 D260 (FILLET TRIM) USED AGAINST ABUTTING WALLS WITH C100 FLASHING
- 5 C100 (FLASHING TRIM) SIMULATED LEAD FLASHING FOR USE WITH D260
- 6 C1 (UNIVERSAL CORNER) FOR USE WITH A200 AND B260 PROFILES TO FORM LEFT OR RIGHT HAND CORNER
- 7 AT195 EXT (EXTERNAL ANGLE TRIM SHOWN, INTERNAL AT195 ALSO AVAILABLE) FOR STEP DETAILS, COVER FLASHINGS ETC.
- 8 F300 (FLAT FLASHING) FLAT SHEET FOR USE AS CONTINUOUS FLASHING UNDER SLATES AT A ROOF JUNCTION. CAN ALSO BE USED AS A GUTTER LINING.
- 9 C3 INT/EXT (FILLET CORNER) FOR USE WITH D260 PROFILE TO FORM INTERNAL OR EXTERNAL CORNER
- 10 GRP LAMINATE CONSISTING OF:-  
CURE IT ROOFING RESIN  
CURE IT REINFORCEMENT MAT
- 11 CURE IT TOPCOAT

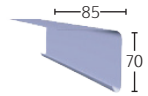


## A Trims



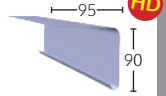
### A170 - TRA170

**Fascia Trim** - Fitted to roof edges to allow drainage.



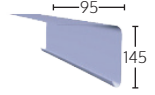
### A200 - TRA200

**Fascia Trim** - Fitted to roof edges to allow drainage into gutter.  
Compatible with C1, C2 and C4 corner trims.



### A250 - TRA250

**Fascia Trim** - Fitted to roof edges to allow drainage into gutter.  
Compatible with C1, C2 and C4 corner trims.

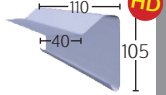


## B Trims



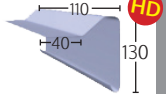
### B230 - TRB230

**Raised Edge Trim** - Flat roof edge detail to prevent water run off.  
Drip matches A170.



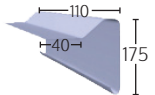
### B260 - TRB260

**Raised Edge Trim** - Flat roof edge detail to prevent water run off.  
Compatible with C1, C2 and C4 corner trims.



### B300 - TRB300

**Deep fascia raised edge trim.** Ideal for a warm roof specification.  
Drip matches with A250 trim.

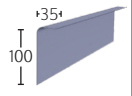


## C Trims\*



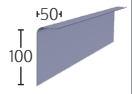
### C100 - TRC100

**Simulated Lead Flashing** - Replaces traditional lead flashing.  
Dark grey, non adhesive finish to simulate the appearance of lead.



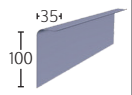
### C100L - TRC100L

**Simulated Lead Flashing Long Leg** - As C100 with deep wall penetration.



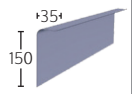
### C100MT - TRC100MT

**Simulated Lead Flashing with Moisture Trap** - As C100 with integral self-securing moisture trap.



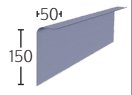
### C150 - TRC150

**Simulated Lead Flashing** - Replaces traditional lead flashing.  
Dark grey, non adhesive finish to simulate the appearance of lead.



### C150L - TRC150L

**Simulated Lead Flashing Long Leg** - As C150 with deep wall penetration.



\*Do not topcoat

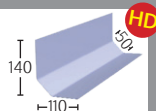
**HD** Heavy Duty Trim available

## D Trims



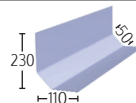
### D260 - TRD260

**Wall Fillet** - Asymmetric fillet trim for use against abutting walls. Also provides expansion.



### D300 - TRD300

**Long Flange Wall Fillet** - Extra wide asymmetric fillet for use against abutting walls. Also provides expansion.

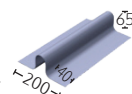


## E Trims



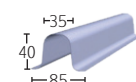
### E280 - TRE280

**Raised Ridge Roll** - Used as an expansion joint on larger roofs and to create rolls on any ridge details. Compatible with C5 preformed closures.



### ER35/40 - TRER35/40

**Simulated Lead Rolled Joint (Rolled Rib)** - Simulates the appearance of raised rolled lead joints. Compatible with C6 preformed closures.



## F Trims



### F150/300/600/900 - TRF150/TRF300/TRF600/TRF900

**Flat Flashing** - Flat section for use as continuous flashing under slates at a roof junction. It can also be used as a gutter lining.

Min width: 1500 - Max width: 900 Length: 20m Roll

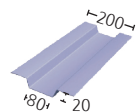


## G Trims



### G180 - TRG180

**Gully Trim** - Used on larger roofs to aid drainage.

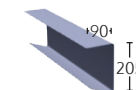


## S Trims



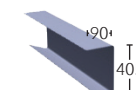
### S500 - TRS500

**Soffit Trim** - To fully encapsulate a concrete edge or similar roof edge detail.



### S700 - TRS700

**Soffit Trim** - To fully encapsulate a concrete edge or similar roof edge detail.

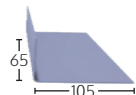


## AT Trims



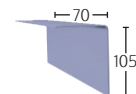
### AT195Int - TRAT195IT

**Internal Angle Trim** - High adhesion surface on inner face for forming upstands, gutter floors etc.



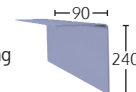
### AT195Ext - TRAT195E

**External Angle Trim** - High adhesion finish on outer face for step details, cover flashings etc.



### AT300Ext - TRAT300EXT

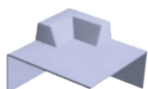
**External Angle Trim** - Extra-long external angle trim for encapsulating block/step features including parapet wall detail.



# Preformed Corners

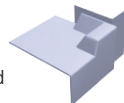
## C1 - C1

**Universal External Corner** - For use with all A and B trims to form a left or right hand corner.



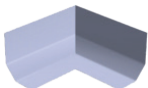
## C2 - C2L/C2R

**Fillet to Trim** - For use where a flat roof meets an abutting wall. Compatible with all A, B and D trims. Right and left corners available.



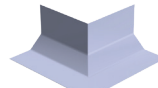
## C3 (Int) - C3INT

**Internal Fillet Corner** - Used as a preformed internal corner for all D-trims. Avoids mitring in situ.



## C3 (Ext) - C3EXT

**External Fillet Corner** - Used as a preformed external corner for all D trims. Avoids mitring in situ.



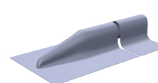
## C4 - C4

**Universal Internal Corner** - For use with A200 and B260 trims to form a left or right hand corner.



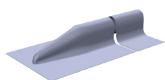
## C5 - C5

**Roof Ridge Closure** - Preformed closure for use with E280 profiles.



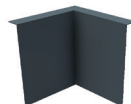
## C6 (ER35/40) - C6

**Rolled Rib Closure** - Preformed closure trim for use with ER35/40 profiles.



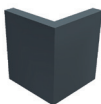
## C7 (Int) - C7INT

**Simulated Lead Flashing Corner** - Preformed internal corner for C100 and C150 type flashings.



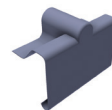
## C7 (Ext) - C7EXT

**Simulated Lead Flashing Corner** - Preformed external corner for C100 and C150 type flashings.



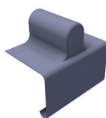
## C8B - C8B

**Expansion Closure** - For use on expansion joints. Compatible with E280 and all B trims.



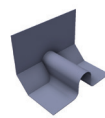
## C9A - C9A

**Expansion Closure** - For use on expansion joints. Compatible with E280 and all A trims.



## C11D - C11D

**Expansion Closure** - For use on expansion joints. Compatible with E280 and all D trims.



## DOWNLOAD THE CURE IT APP - YOUR ESSENTIAL INSTALLATION GUIDE

The Cure It App provides all the information and guidance you will need to install a Cure It roof.

### The app includes:

- Product Guide
- Stage by Stage Installation Guide
- Fall Helper tool
- Ready Reckoner to Calculate Materials
- Video installation tutorials

**Training recommended**  
To book on a course visit  
[www.cureit.com/training](http://www.cureit.com/training)

