

# The Fascia Place

## Landscaping Solutions

**Innovative, quality design  
for commercial and domestic  
landscaping projects**

Sales: 01256 635215  
[www.thefasciaplace.co.uk](http://www.thefasciaplace.co.uk)

Camberley – 01276 65498  
Bridgwater – 01278 433799  
Guildford – 01483 301666  
Ashford – 01784 251199  
Petersfield – 01730 891036  
Basingstoke – 01256 334829  
Newbury – 01635 36519  
Lewisham – 0208 314 5905  
Brighton – 01273 625050  
Dartford – 01322 554418  
Portsmouth – 02392 387823  
Tunbridge Wells – 01892 524169  
Bracknell – 01344 308785  
Gillingham – 01634 975557

### Showroom Locations

Bridgwater  
Guildford  
Newbury  
Lewisham  
Bracknell

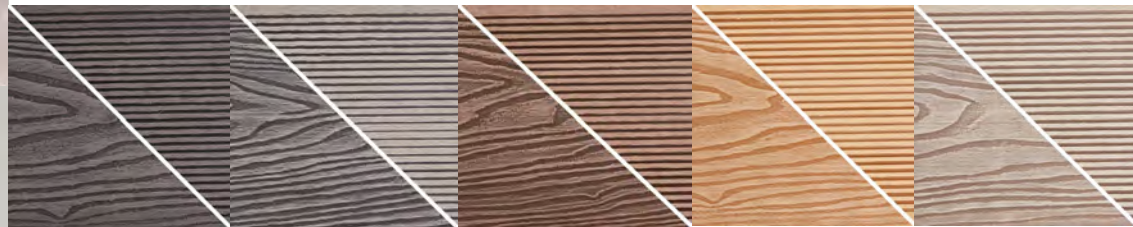




# Composite Decking

Anti-Slip Surface, Does not Accommodate Algae Growth, UV Weather Stable Properties: Does not Rot, Splinter or Warp, Made From Eco-Friendly Materials, Choice of 5 Colours (Black, Grey, Natural, Teak & Brown)

- 10 Year Warranty
- Anti-Slip Surface
- Does not Accommodate Algae Growth
- UV Weather Stable Properties
- Does not Rot, Splinter or Warp
- Simple Installation Process
- Unique Removable Clip System for Easy Access (PVC Clip)
- Made From Eco-Friendly Materials
- Virtually Maintenance Free
- Choice of 5 Colours (Black, Grey, Natural, Teak & Brown)
- Two Design Options (Woodgrain \*NEW\* or Narrow Spaced Grooves)



WPC decking is perfect for private homes, parks, recreational centres, caravan and camping sites. It should be considered when upgrading and renovating and can be installed at any time of the year, although we would advise installation during the spring.

WPC decking, or composite decking, is a decking material solution made from a unique combination of plastic and wood. WPC stands for Wood Plastic Composite and this composite is made up of 45% timber fibres and 55% HDPE and additives.



Water  
Resistant



Natural Look  
and Feel



Quick and Easy  
Installation



Slip  
Resistant



Easy to Clean  
and Maintain



Eco-friendly  
Solution



# Composite Railing System

For looks that impress, and performance that endures, the Composite Railing System is the durable alternative to traditional timber balustrading.

Better. Does not rot, unlike timber balustrading, weather resistant and easy to clean.

Faster. Quick and easy to install.

Safer. Durable, split and splinter-free surface.

Flat, 'sanded' effect finish available in Estándar Charcoal or Estándar Brown.

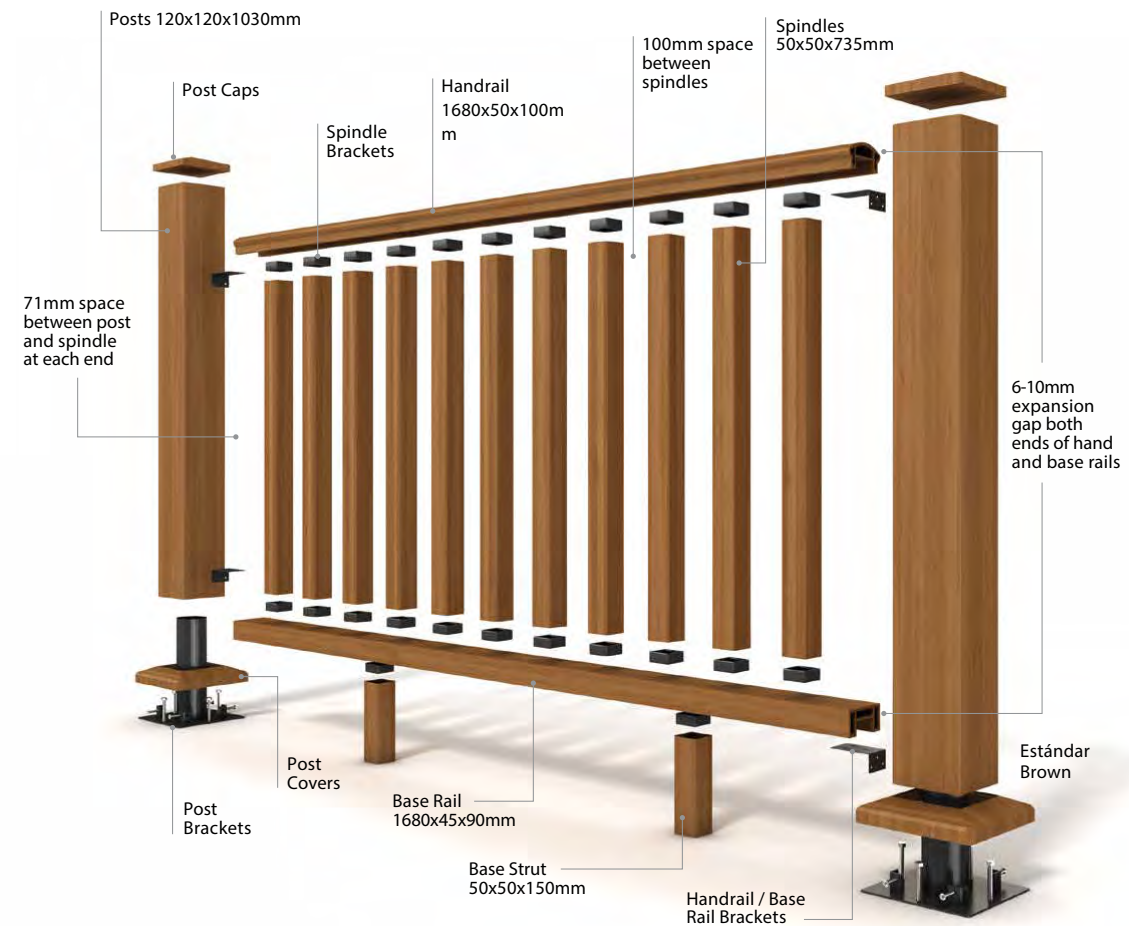
Low maintenance.

Hidden fixing system.

Environmentally friendly.

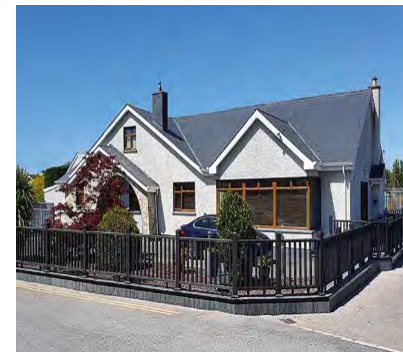


All images featured are representative only and whilst care has been taken to reproduce Guardian colours, due to limitations in the printing process, the images shown may not exactly match actual product.



## Installation

- Fit the post brackets to the sub-base (concrete or joists).
- Fit the posts to the post brackets, leaving a 6-10mm gap for expansion around the post.  
Fit the post covers.
- Fit 4 L-shaped brackets and position 2 struts equally spaced along base rail (L-shaped brackets are fitted with the long angle fixed to the rails).
- Fit the base rail with 2 spindle mounts in position below the rail to accommodate the base struts.
- Fit 11 equally spaced spindle base rail mounts to the base rail.
- Fit the top hand rail with 11 corresponding equally spaced rail mounts then pit to the posts.
- When fitting both the hand and base rails, ensure expansion gap between the rail ends and the posts.
- Finally, fit the post caps.



A 1.8 metre balustrade module consists of a single post assembly, top and bottom rails and 11 spindles, plus all struts brackets and fixings. Therefore an additional post assembly would normally be required to complete a run of balustrade.

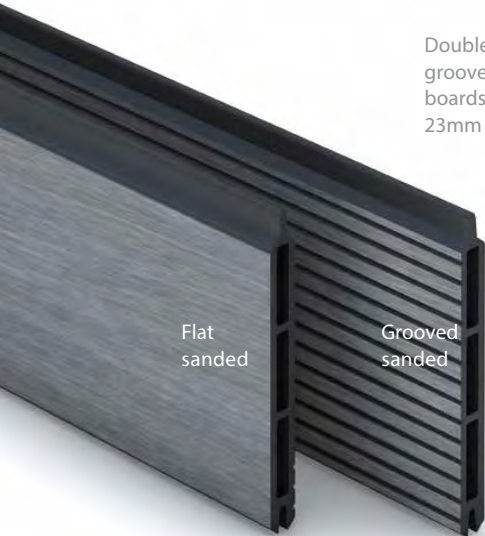
# Composite Fencing

Elegant modern composite fencing system that will enhance any garden.


Easily installed aluminium posts are available with two different anchoring systems: bolted directly to pre-existing concrete base using flat bottomed supports; or impaled in concrete using spike supports. Featuring 4 separate slots, the aluminium posts allow for multi-directional installation - straight, 90° or T-section.

Boards can be used as replacement panels with our unique composite post adaptor - simply slot the composite post adaptor into the concrete channel in existing concrete posts and slide the boards in place. Use in conjunction with the starter rail and finishing trim kit to complete the look.

Another unique development is our aluminium trim to allow you to install in front of existing neighbouring fencing using our top and bottom trim. Fix the aluminium trim into the concrete channel and insert the fence boards into the aluminium U-channel in conjunction with the starter rail and finishing trim kit.




Double-sided (flat sanded and grooved sanded) hollow fence boards available in grey: 150mm x 23mm x 1.79m.

- 

Natural Look and Feel
- 

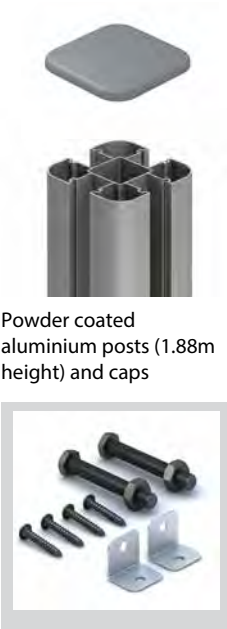
Quick and Easy Installation
- 

Easy to Clean and Maintain
- 

Eco-friendly Solution

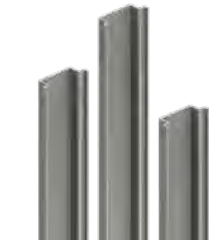


Post supports for hard / concrete surfaces



Powder coated aluminium posts (1.88m height) and caps

All fixings and brackets supplied



Powder coated aluminium posts finishing trims



Composite concrete post adaptor (1.8m height)



Fence board starter rail and finishing trim



Existing neighbouring fence adapter trim

All images featured are representative only and whilst care has been taken to reproduce Guardian colours, due to limitations in the printing process, the images shown may not exactly match actual product.





# Artificial Grass

From a few square meters for your garden to large commercial projects, we have the capability to service your requirements big or small. We guarantee consistency, top class quality and great customer care ensuring long life PermaLawn artificial grass solutions for all your projects. Our grasses come with a 10 year warranty and are manufactured to have high standards of durability and longevity.



## PermaLawn Hastings 35mm Artificial Grass

- Natural Soft Feel
- Perfect for Gardens & High Traffic Areas
- Made in Europe



## PermaLawn Weed Block Membrane

- Roll length: 100m – Roll width: 2m
- A must need product during installation
- Effective weed control
- Easy to cut
- Long lasting design
- Allows water to easily drain away
- Great non-chemical solution to weeds



## PermaLawn Artificial Grass Pegs – 10 Pack

- Helps to secure grass in place
- Peg diameter: 3mm
- Top half coloured green to blend into the grass
- Coating: Hot dipped galvanised
- Length: 150mm (6 inches)
- Great value
- Width: 30mm (1.1 inches)
- QTY: 10 per pack.

