

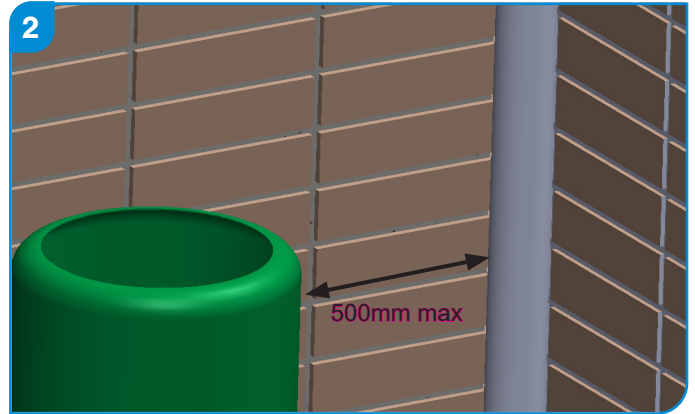
Installation Guide

WATER BUTT DEFLECTOR KIT

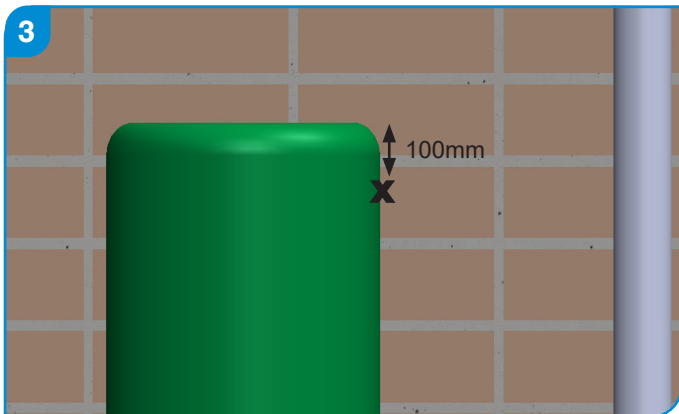
Please note that the kit supplied is made up of 500mm of flexible tubing plus 2no tank connectors, of which only one connector is needed.



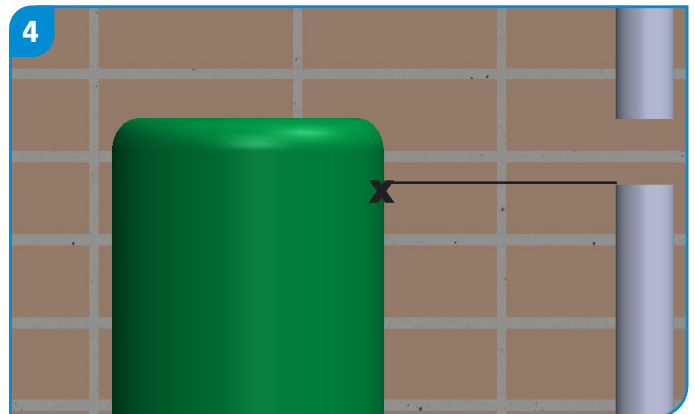
Remove items from the pack and put in a safe place, along with the rainwater diverter.



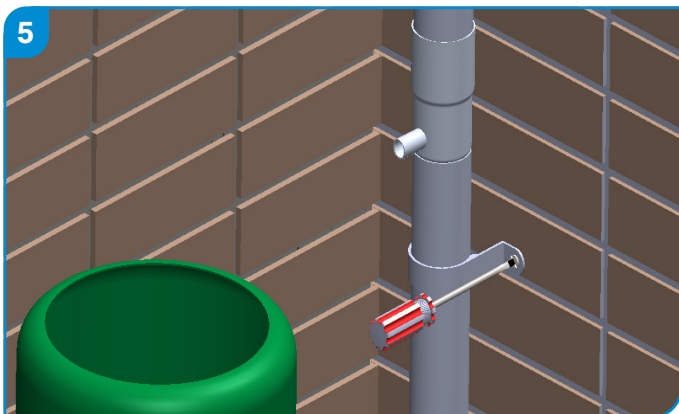
Make sure that the water butt is on level ground and positioned no more than 500mm from the downpipe.



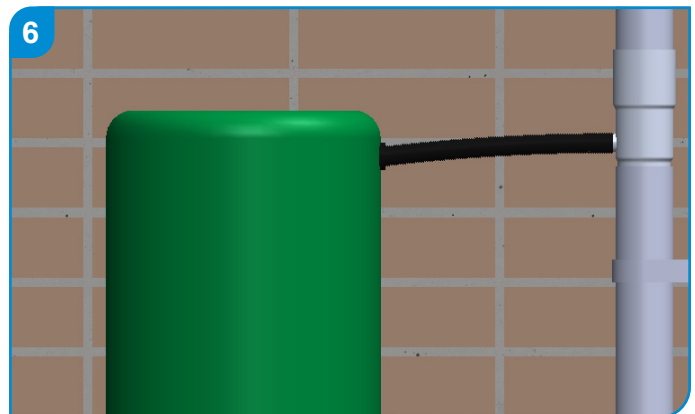
Measure 100mm from the top of the butt and mark it. Using a hole saw, drill a hole and fit the tank connector.



Taking a level from the bottom of your drilled hole, mark a line on the downpipe and then a further line 70mm higher. Cut the downpipe at both marks and support.



Manoeuvre the diverter onto to downpipe and attach a pipe clip to support the diverter.



Attach the flexible hose to both the water butt connector and the diverter. Replace the water butt lid.



Any cut lengths should be de-burred and touched up with touch-up paint supplied prior to installation. For more information or further assistance, please contact us.